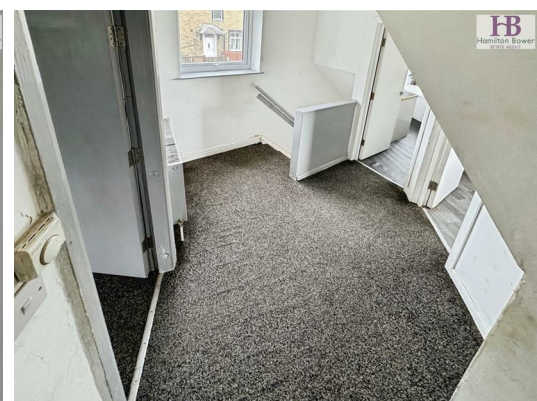
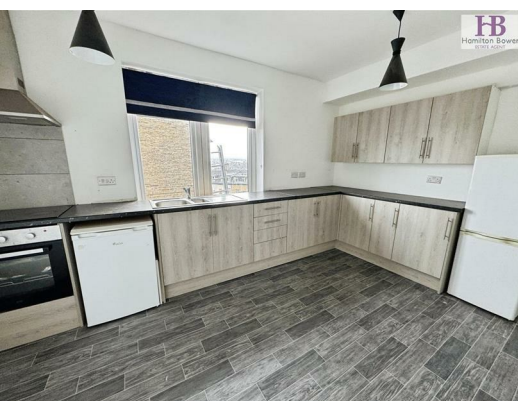




**48B Cliffe Road, Bradford, BD3 0LZ**  
**£695**

Generously sized TWO BEDROOM flat located close to Bradford City Centre. The property offers living accommodation over two floors with modern fixtures and fittings throughout and benefits from a private entrance and a paved garden.



**EPC RATING - TBC**

**COUNCIL TAX BAND - A**

### **ENTRANCE**

Ground floor entrance with stairs up to the flat.

### **FIRST FLOOR**

#### **HALLWAY**

Spacious hallway with stairs to the second floor, a double glazed window and a central heating radiator.

#### **LOUNGE**

With a double glazed window and a central heating radiator.

#### **KITCHEN**

Fitted wall and base units to two sides with a contrasting work surface over incorporating a stainless steel sink and mixer tap. Integrated electric oven with hob and extractor over. Double glazed window, central heating radiator and ample space for a dining table.

#### **BATHROOM**

Modern fitted three piece suite in white with shower over bath. Double glazed window and a central heating radiator.

### **SECOND FLOOR**

#### **BEDROOM**

Double bedroom with a Velux window and a central heating radiator.

#### **BEDROOM**

Double bedroom with a Velux window and a central heating radiator.

#### **EXTERNAL**

Paved yard to rear.

